

SAMSUNG

Samsung Electronics America, Inc.
400 Valley Road, Suite 201 Mount Arlington, NJ 07856
1-800-SAMSUNG (1-800-726-7864)
www.samsung.com

AH68-01669B (Rev 0.0)

YP-W3

SAMSUNG



YP-W3

Contents

1. Before You Begin

Safety Instructions	4
Charging the battery	8
Features	10
Components.....	12
Location of Controls	14

2. Connecting to Your Computer

Connecting the player to your PC	16
Manual installation of the USB Driver	20
Using the removable storage (PC)	24
Formatting on your PC	24
Downloading/Uploading files.....	25
Disconnecting the USB cable	26
Transferring music files using Windows Media.....	27
Installing Music Studio	29
Using Music Studio.....	31
To View Help on Music Studio	35

3. Using Your Player

Playing Music and Turning Off the Device	36
Adjusting Volume/Hold Function	37
Recording Voice	38
Searching for Music/Voice Files	39
Loop Repeating	40
MENU Options	41
Listening to FM Radio	42
FM Recording	44
Using Navigation	45

4. Setting Your Player

Setting the Advanced Functions.....	46
Selecting the Play Mode.....	47
Setting Sound Effects.....	48
EQ	48
SRS	48
Beep	49

Time Settings	50
Time Set.....	50
Clock Type Set	50
Sleep	51
Auto Off Time	51
Clock Screen Saver	52
Display Settings	52
Contrast.....	52
Screen Settings	53
LCD brightness.....	53
Backlight Time.....	53
Language Setting	54
FM Radio Settings.....	55
Auto Preset	55
FM Search Level.....	55
FM Region	56
Managing Files	57
Deleting Files	57
Formatting from the MP3 player.....	58
About.....	58

5. Appendix

MENU Table.....	59
-----------------	----

6. Customer Support

Troubleshooting.....	60
Specifications	62

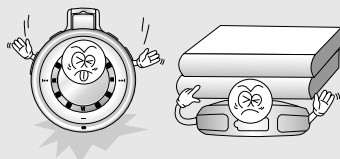
Safety Instructions

Read and understand all the instructions to avoid injury to yourself and damage to the equipment.

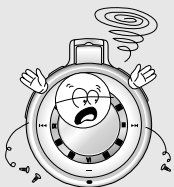
Do not expose to extreme temperatures (above 95°F or below 23°F). Do not expose to moisture.



Do not subject the player to severe impact, or place heavy objects on it.



Do not let any foreign matter spill into the device.



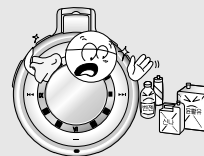
Be careful not to subject the player to excessive pressure when wearing it round your neck.



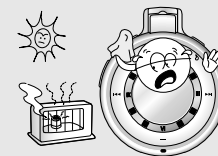
Safety Instructions

* Please be aware that we claim no responsibility for damage from data loss due to breakdown, repair or other causes.

Do not expose to chemicals such as benzene and thinners.



Do not expose to direct sunlight or heat sources.



Do not store in dusty areas.



Do not try to disassemble and repair the device yourself.



Safety Instructions

Earphones

Follow Traffic Safety Instructions

- Do not use the earphones while driving an automobile or riding a bicycle. It's not only dangerous, but also against the law. To avoid an accident, do not turn up the volume of the earphones too high while walking.

Protect your ears

- Do not turn up the volume too high. Doctors warn against prolonged exposure to high volume.
- Stop using the device or turn the volume down if you have ringing in your ears.

Ambient operating conditions

- Ambient temperature : 5°C ~ 35°C (41°F ~ 95°F)
- Humidity : 10 ~ 75%

Environmental Information

- Follow local guidelines for waste disposal when discarding packages, batteries, and old electronic appliances.

Battery Charger Safety



CAUTION

Opening the case may result in electric shock.



ENG

Warning

The uninsulated parts inside the charger may cause electric shock. Please do not open the charger case for your safety. Read the user manual to prevent problems while using the charger.

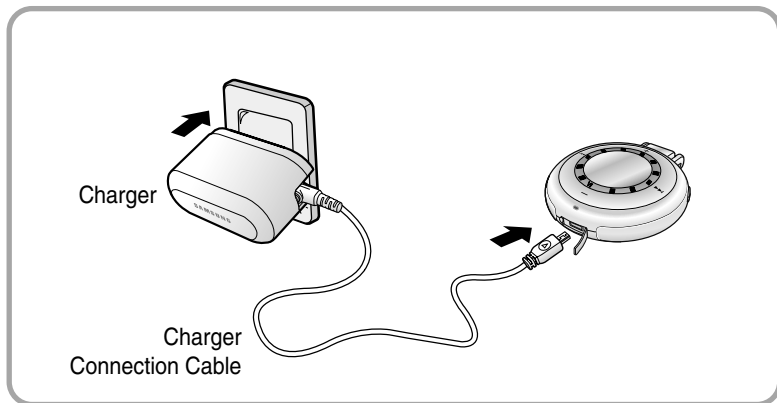
- Use the charger away from water sources to avoid fire or electric shock.

Caution

Read the user manual to prevent problems while using the charger.

- To avoid electric shock, use the charger only with a power outlet that matches the shape of the converter's plug.
- Make sure that the charger's plug is inserted all the way into the outlet.

Charging the battery



The charger is supplied with your player.

Plug the charger into a wall outlet.

- * When recharging is complete, "100% CHARGED" is shown in the display window.
- * The unit can also be charged at low speed using the power supplied from your computer through the USB cable.
- * Battery recharge time in normal operation is approximately 2.5 hours.

Charging the battery

Caution

- Do not plug several devices into the same outlet.
- Do not use a defective charger.
- When using the rechargeable battery for the first time or after several months of non-use, fully charge it first.
- Do not charge the player longer than 12 hours.
- Overcharging will reduce the battery life.
- The rechargeable battery is a consumable item and its capacity will decrease gradually.
- To prolong the life of your battery, use the fully charged battery until it is completely discharged, and then fully charge it again before use. If you charge the battery that is not completely drained, the battery operating time will decrease. In this case, fully cycle (fully charge and then fully discharge) the battery several times.
- Do not let metallic objects, such as necklaces or coins, come into contact with the terminals (metallic parts) of the charger and the built-in rechargeable battery. A fire or electric shock may result.
- Do not touch the charger with wet hands.

Features

MP3, WMA, Audio ASF, Secure WMA and Ogg Playback

The player supports playback of MP3, WMA, Audio ASF, Secure WMA and Ogg(Ogg Vorbis)

*OGG is a new audio compression format that is free, open and unpatented.
For more info, see www.vorbis.com

Removable Storage Device

You can easily copy and paste files to the player using Windows Explorer.

FM Reception and Recording

Listening to an FM program is made easy with Auto Search and Frequency Memory functions. You can record FM broadcasts.

SRS WOW Surround Sound

The 3D surround(SRS) feature adds spaciousness to the sound.

USB 2.0 High Speed Data Transfer

Maximum data speed transfer of 70 Mbps

Upgradable

You can upgrade the built-in programs when available.
Please check the home page (www.samsung.com) for upgrades.

Built-in Rechargeable Li-polymer Battery










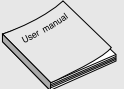

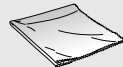
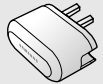

The built-in rechargeable lithium battery provides up to 8 hours of play time.

*Time may vary depending on usage pattern

Voice Recording Function

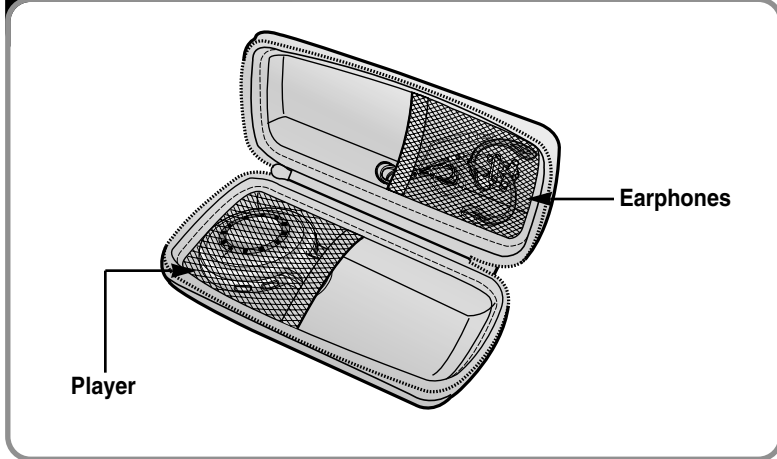
You can make high quality voice recordings.

Components

			
Player	Carrying case AH61-01894A	Portable Case AH61-01994A	Installation CD AH80-00100B
			
Earphones AH30-00073A	USB Cable AH39-00731A	Neck Strap AH61-01895A	Belt Chain AH61-01896A
			
Direct Connect USB Adaptor AH39-00730A	User manual AH68-01669B	Belt Chain Case AH61-01991A	Cotton Tissue AH61-01993A
			
Charger AH44-00085B	Charger Connection Cable AH39-00732A		

Components

Portable Case



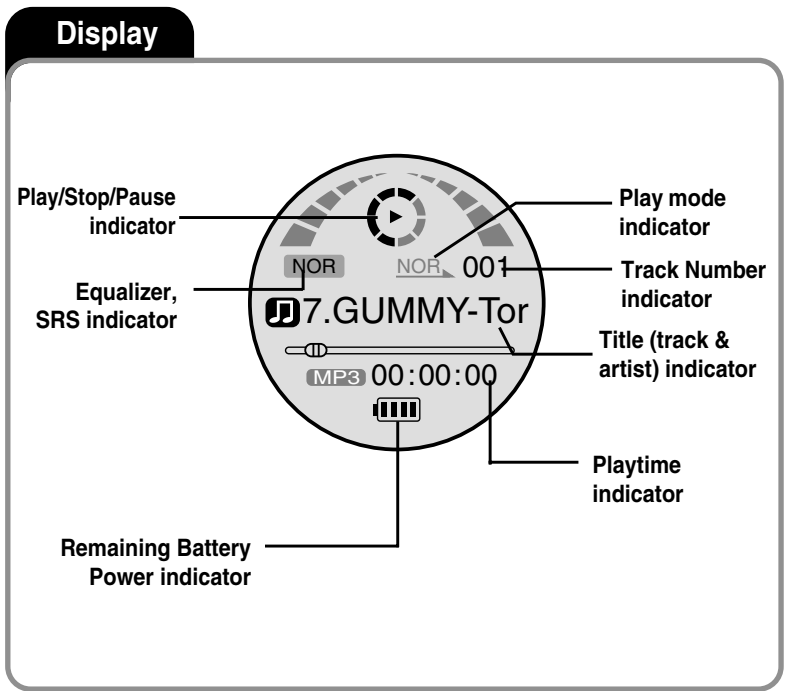
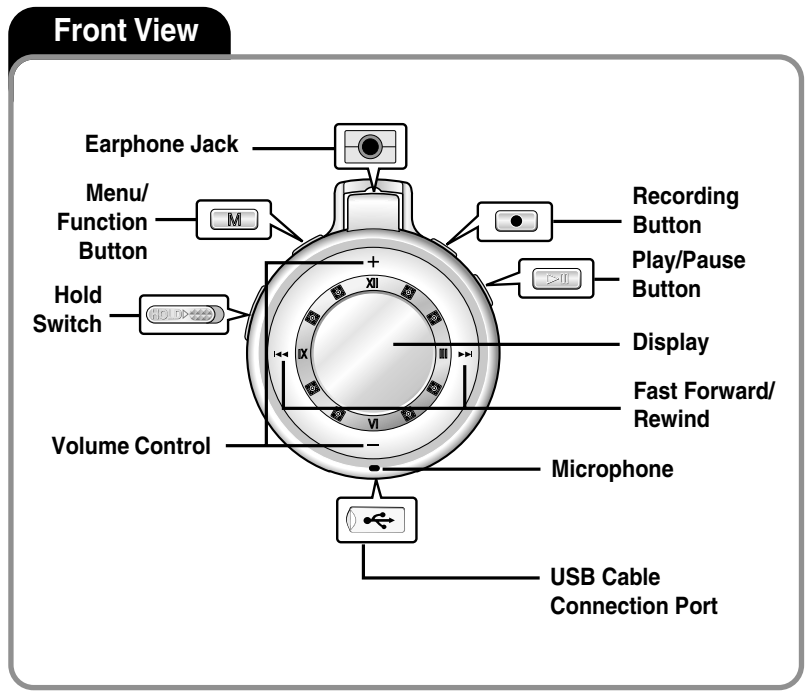
The diagram shows an open rectangular case with two compartments. The left compartment is labeled 'Player' and contains a small electronic device. The right compartment is labeled 'Earphones' and contains a pair of earbuds with a mesh case.

ENG

- Note**
- The capacity of the useable built-in memory is less than indicated as the internal firmware uses part of the memory as well.
 - The accessories' design is subject to change for the purpose of improvement, without notice.

Location of Controls

Location of Controls



ENG

Connecting the player to your PC

Connecting the player to your PC

For Windows 98SE, install the USB driver prior to connecting the player to PC.

System Requirements.

The PC system must meet the following specifications:

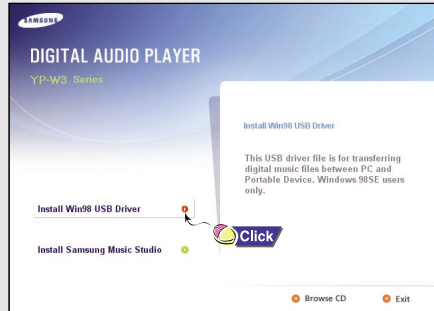
- Pentium 200MHz or greater
- Windows 98 SE/ME/2000/XP
- 40MB of available hard disk space
- CD-ROM drive (double speed or greater)
- USB port (2.0) supported
- VGA graphic

Note

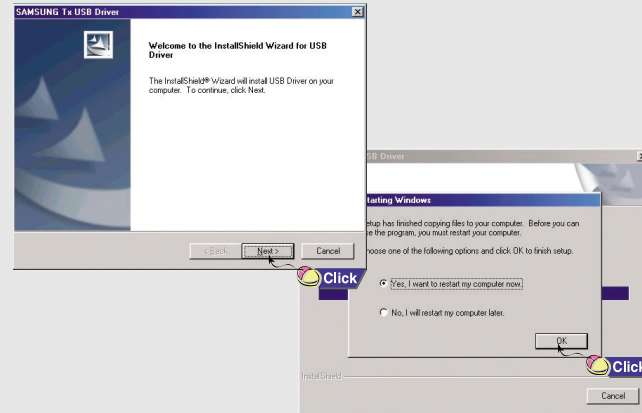
- Log into your PC as an administrator (Main User) and install the supplied software (Music Studio) for Windows 2000 or XP. Otherwise, the software may not install properly.

Installing software

- 1 Insert the Installation CD into the CD-ROM drive.
Select **[Install Player USB Driver]**.



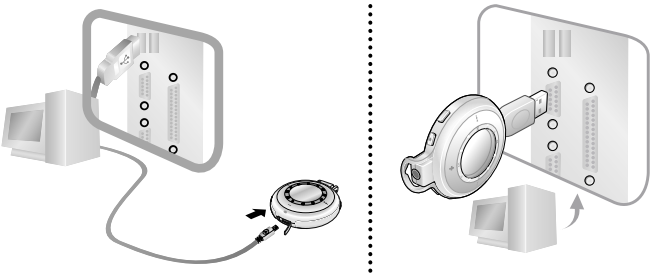
- 2 Follow the instructions in the window to complete the installation.



Connecting the player to your PC

Connecting the player to your PC with the USB cable

- 1 Connect the USB cable to the USB port on your computer.
 - 2 Connect the other end of the USB cable to the USB cable connection port on the bottom of the player.
 - If you disconnect the USB cable from your PC while implementing a command or initializing during USB driver installation, your PC may not function correctly.
- Note**
- You can also connect the player to your PC with the Direct connect USB adaptor.
- 3 The USB driver is installed with a message saying that it is searching for a new device. You may not see the display screen during installation. Go to the device manager (see next page) to check that installation has been successfully completed.



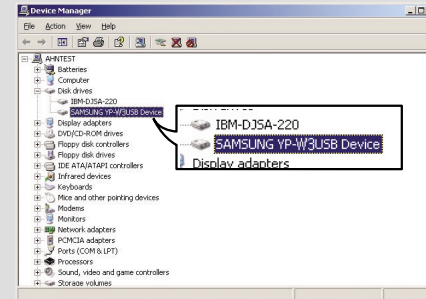
18

Connecting the player to your PC

- 4 Upon installation of the USB driver "SAMSUNG YP-W3 USB Device" will appear in the [System Properties] → [Device Manager].

How to check if USB driver is properly installed

- Windows 98:
Control Panel → System → Device Manager → Disk Drives → SAMSUNG YP-W3
- Windows 2000/XP:
Start → Settings → Control Panel → System → Hardware → Device Manager → Disk Drives → SAMSUNG YP-W3 USB Device



Note

- A USB driver is a file that lets your PC communicate with the MP3 player.

19

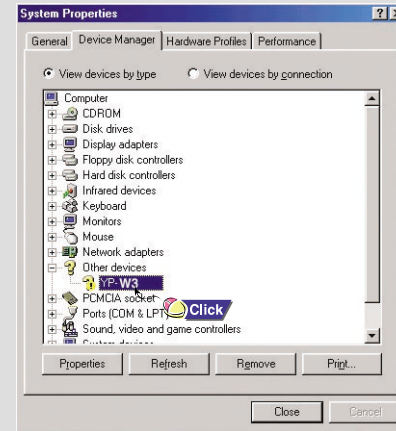
Manual installation of the USB Driver

If the driver does not install automatically, follow the instructions below to install the USB driver manually.

The USB driver is located in C:\WINDOWS\INF\MUSBA2.inf. If the driver does not appear, click on Browse to locate it.

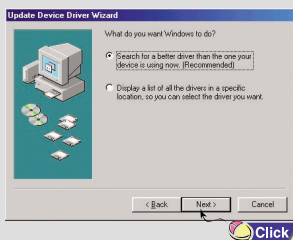
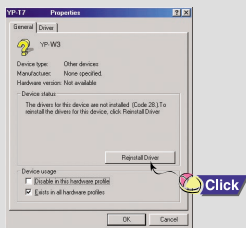
Manual installation of the USB Driver

- 1 Select [Control Panel] → [System] → [Device Manager].
- 2 Click [YP-W3].



Manual installation of the USB Driver

3 Click [Reinstall Driver].



Manual installation of the USB Driver

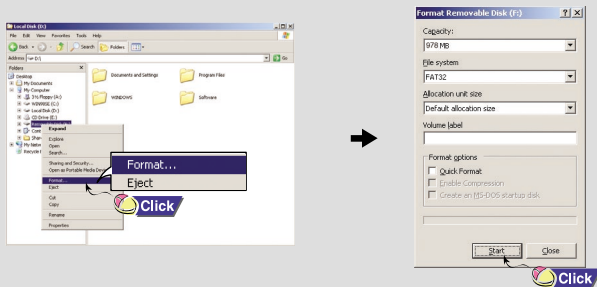
The USB driver is located in C:\WINDOWS\INF\DISKDRV.inf. if the driver does not appear, click on Browse to locate it.

Using the removable storage (PC)

- Before formatting can begin, you must connect your YP-W3 to your PC using the USB cable (see page 16).
- Formatting deletes all files on the MP3 player so maximum memory is available for new file storage. It saves you the trouble of deleting unwanted files one at a time.

Formatting on your PC

- 1 Select the removable disc icon and click the right mouse button to select **[Format]**.
- 2 Use the pull-down menu to set the File System to FAT32.
 - You can change the name of the removable disc (see next page) by selecting **[Volume label]**, then typing text into the field.
- 3 Press the **[Start]** button.
 - All saved files will be formatted (deleted).



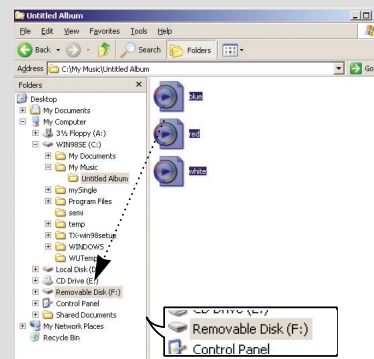
Caution! ■ Care must be taken as formatted files can not be recovered.

Using the removable storage (PC)

When the MP3 player is connected to your PC, the PC will see it as a removable disc. Music and other files can then be dragged and dropped into the removable disc for playback on the MP3 player.

Downloading/Uploading files

- 1 Connect the player to your PC with the supplied USB cable.
- 2 Open Windows Explorer on PC.
 - Removable Disc is displayed in Windows Explorer.
- 3 Select the files to save. Drag and drop them into respective folders in the removable disc.



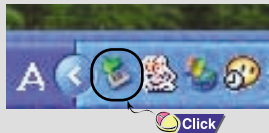
- Caution!** ■ Disconnecting the USB cable while downloading or uploading files may cause malfunction of the player.
- The music file order displayed in Windows Explorer may differ from the play order on your player.

Using the removable storage (PC)

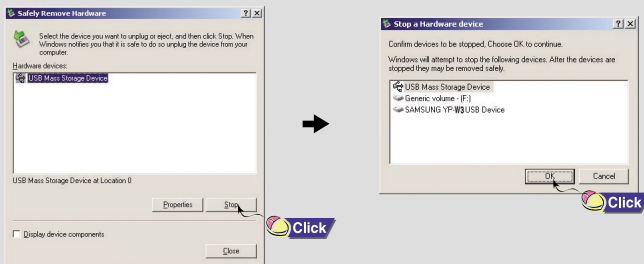
Disconnecting the USB cable

After completing the file transfer, you must disconnect the cable in the following way:

- 1 Double-click on the green arrow in the taskbar on the bottom right of the window.



- 2 When the **[Stop a Hardware device]** message appears, press the **[OK]** button and disconnect the USB cable.



Transferring music files using Windows Media

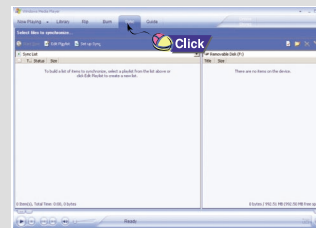
Downloading Secure WMA Files

Make sure to download the Secure WMA file you purchased from a *pay site through Windows Media Player Version 9 or above and save it to a folder on your PC.

*pay site :

www.walmart.com, www.buymusic.com, www.musicnow.com, www.napster.com, etc.

- 1 Connect the player to PC.
- 2 Run the Windows Media Player10.
 - On our PC, select [Start] → [Programs] → [Accessories] → [Entertainment] → [Windows Media Player10].
- 3 Select [Sync].

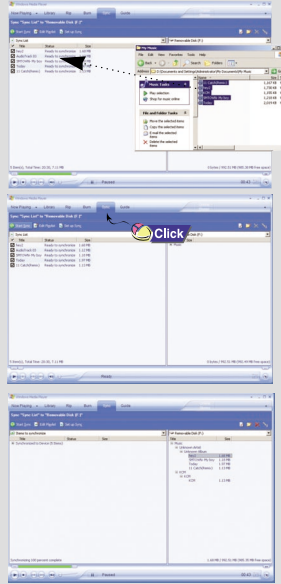


Transferring music files using Windows Media

4 When the **[Sync]** window appears, select the file on your PC you want to transfer to the player using Windows Explorer. Drag and drop the file to the left **[Sync List]** window

5 Press the **Start Sync** **[Start Sync]** button on the main screen and the file will be transferred.

6 You can see the transferred file in the right window. The right window shows the files contained on your MP3 player.

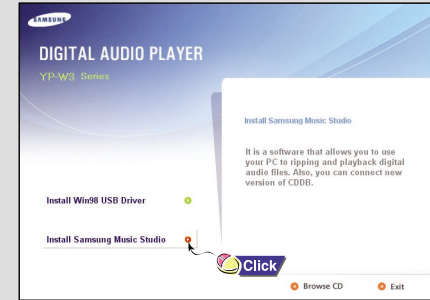


Note ■ Make sure to use Media Player 9.0 or above to play Secure WMA files downloaded from a pay site.

Installing Music Studio

- Music Studio is a program that enables you to play back music files on your PC's HD and CD-ROM drive.
- You can not transfer music files to the player with Music Studio.

1 Insert the Installation CD into CD-ROM drive. Select **[Install Samsung Music Studio]**.



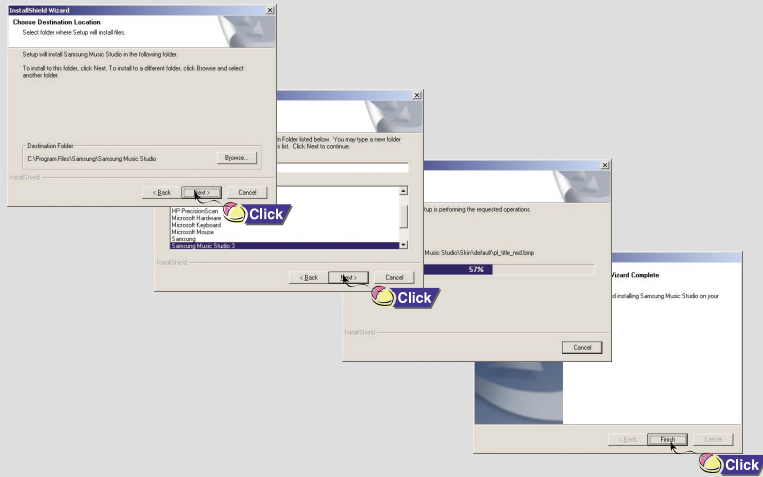
2 Select language.




Installing Music Studio

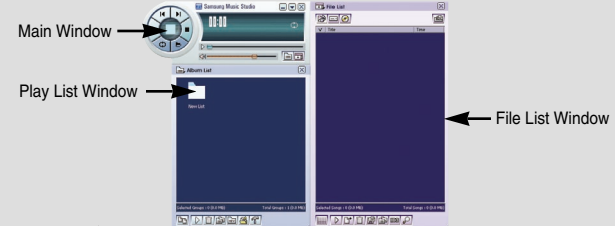
Using Music Studio


- 3** Follow the instructions in the window to complete the installation.
 ■ Please refer to Help for more information on how to use Music Studio.

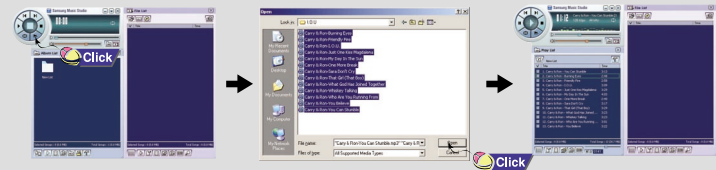


Playing Music

- 1** Double click the Music Studio icon  on your PC.




- 2** Click the  [Open Files] button in the main window to open the [Open] dialog box and select the music files you want to play back. Then click the [Open] button.
 ■ The Selected files are automatically played back.

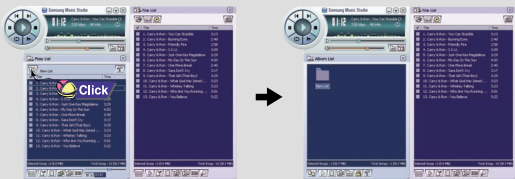


Using Music Studio

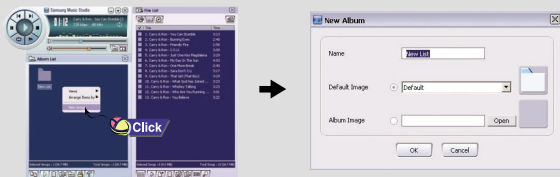
You can create an Album that will contain a group of your favorite songs for playback.

Creating an Album

- 1 Double click the Music Studio icon on your PC.
- 2 Click the  [Album List] button in the Play List Window.
 - The Album List Window appears.




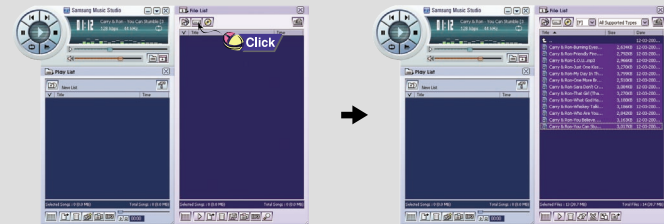
- 3 Click your right mouse button to select [New Group] which opens the [New Album] dialog box. Assign a new name and an image for the new album.
 - To add an Album image file to your album, click Open to the right of the Album image window and select a desired image from your PC.



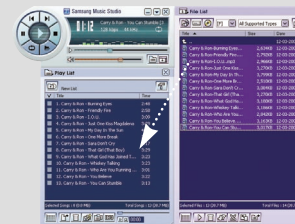
32


Using Music Studio

- 4 After creating the New Album, click the  [To HDD Mode] button in the File List Window to select music files stored in your computer.



- 5 Drag and drop the selected music files into the Play List Window.



- Note** ■ To change the Name and image for an Album, click the  [Properties] button in the Play List Window. After bringing up the [Album Properties] window, assign the desired name and image and then press the [OK] button.

ENG


33

Using Music Studio

You can convert CD Audio tracks to MP3 or WMA(Windows Media Audio) format by using Music Studio.

Converting Music File Formats

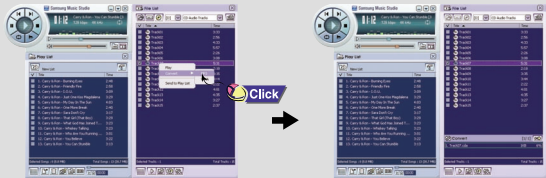
1 Double click the Music Studio icon on your PC.


2 Insert an audio CD into your CD drive and click the  [To CD-ROM Mode] button in the File List Window.



3 After selecting the tracks to be converted, click with the right mouse button to choose the file format.

■ The tracks are converted into the selected format.



 **Note** ■ Converted files are saved in the folder C:\My Music.

Using Music Studio

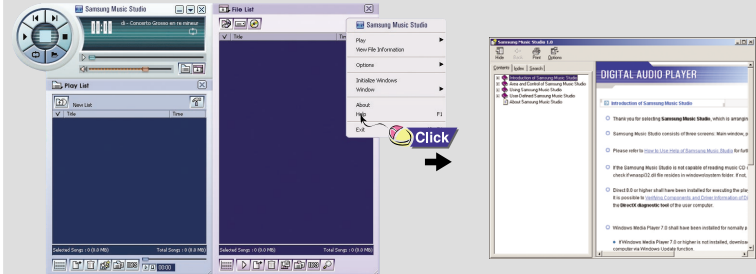
To View Help on Music Studio

Run Music Studio and press **F1**.

■ Help will appear.

Move the arrow to the top of Music Studio and right click on the mouse. The following selection window will appear.

■ Click on Help and the Help window will appear.



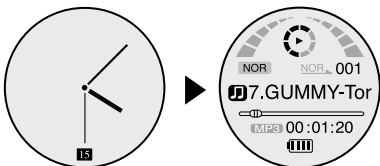
 **Note**

- Music recognition technology and related data are provided by Gracenote and Gracenote CDDB® Music Recognition ServiceSM.
- CDDB is a registered trademark of Gracenote. The Gracenote logo and logotype, the Gracenote CDDB logo and logotype, and the "Powered by Gracenote CDDB" logo are trademarks of Gracenote. Music Recognition Service and MRS are service marks of Gracenote.

Playing Music and Turning Off the Device

Playing Music (Power On)

- Press the **▶||** button on the player. The clock appears on the screen.
- Press the **▶||** button once again to play a music/voice file.
- When turning on the main unit, only analog clock type is supported.



Pausing Music

- Press the **▶||** button to pause playback.
- If no buttons are pressed within 30 seconds (or a custom set Auto off time you selected), the player automatically powers off.
 - While in Pause mode, press the button again to resume playback.

Power Off

Press and hold the **▶||** button to turn off the power.



Note

- If the file name is not displayed correctly, move to [Settings] → [Display] → [Language] and then change the language setting.
- The power off time can be set in the menu.
- If the MP3 player is in Clock Screen saver mode, you must press **▶||** before you can play files or access menus. (See page 52)

Adjusting Volume/HOLD Function

Adjusting Volume

Press **—**, **+** to adjust the volume from 00 to 40



HOLD Function

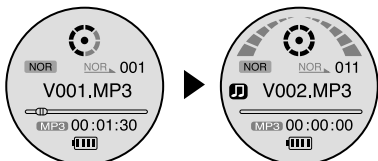
In Hold mode, all buttons are disabled.
This is useful when using the player and walking, jogging etc.

Slide the **HOLD▶** switch in the direction of the arrow.

※ When the button is pressed, the “ HOLD” message will appear on the display.

Recording Voice

- 1 Press and hold the REC button for 2 seconds to start voice recording.
- 2 Press the REC button again to stop the recording and save the voice file.



Note

- The files are recorded in the order of V001,V002.....,and saved as MP3 files in the VOICE folder after recording.
- If the Memory is full, Voice Recording will be disabled automatically.

Searching for Music/Voice Files

To search for specific parts during play

- Press and hold **◀◀**, **▶▶** during playback to search for a specific section of the music file you want to listen to.
- Release **◀◀**, **▶▶** to resume play normally.

To change tracks during play

- Press **▶▶** briefly during playback to play the next track.
- Press **◀◀** briefly within 5 seconds after playback starts to move to and play the previous track. Press **◀◀** briefly after 5 seconds to play the current track from the beginning.

To change tracks when stopped/paused

- Press **◀◀**, **▶▶** in stop/pause mode to move to the previous/next track.




Note

- VBR(Variable Bit Rate) file: A file that constantly changes the compression rate according to the type of sounds, such as their pitch, in the file.
- When playing a VBR file, you cannot move to and play the previous track even if you press **◀◀** within 5 seconds after playback starts..
- Files that were downloaded in MP2 or MP1 and had their file extension changed to MP3 may not play.


Loop Repeating

Starting Point


While playing music files, press the  button briefly at the beginning of the loop you want to set. **A↔** appears in the display.



Ending Point

Press the  button briefly again to set the end of the loop. **A↔B** appears in the display. The loop is played repeatedly.



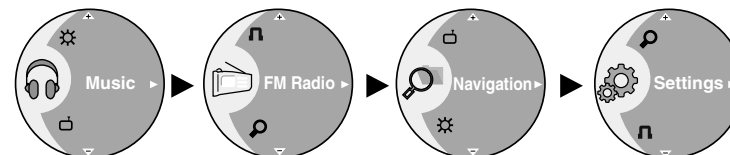
- Note**
- Press the  button briefly to cancel the loop.
 - Loop Repeat is automatically released if you Speed Search with **I◀◀**, **▶▶I**.

MENU Options

Press and hold the "M" button to switch to MENU mode.

Use **—**, **+** to move between the menus and press **▶▶I** briefly to select the sub-menu you want.

Press the "M" button again to exit MENU mode.



- **Music** : To check the file currently playing.
- **FM Radio** : To listen to FM radio.
- **Navigation** : To move to Navigation Mode and browse files and folders.
- **Settings** : To set the functions. (see page 46)



- Note**
- Menu mode will be cancelled if no buttons are pressed within one minute.

Listening to FM Radio

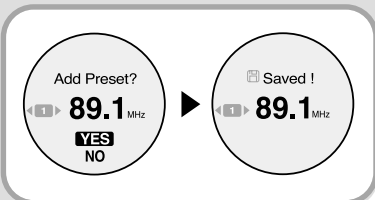
Press and hold the "M" button to display the menu screen.
Select FM Radio and press ►►.

Search for a Frequency

- **Manual Search** : Press ◀◀◀, ▶▶▶ to change the frequency up or down.
- **Automatic Search** : Press and hold ◀◀◀, ▶▶▶ to automatically search for receiving frequencies.

Manual Storage of a Frequency

- 1 Use ◀◀◀, ▶▶▶ to move to the frequency to save, and then press the ►► button.
- 2 Use ◀◀◀, ▶▶▶ to select the number you want to assign to save the frequency.
- 3 Use —, + to select YES, and then press ►►.
 - The selected frequency will be saved.

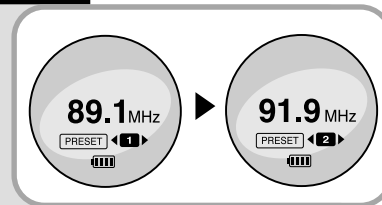


- Note**
- To save frequencies to the preset numbers automatically, select [Settings] → [Environment] → [FM Setting] → [Auto Preset] (see page 55).
 - You can store up to 20 frequencies.
 - Mono (MO) or Stereo (ST) is automatically selected.

Listening to FM Radio

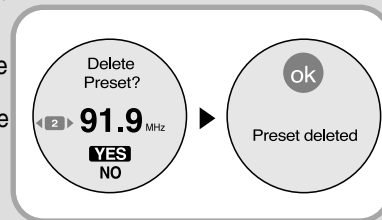
Searching Stored Frequencies

- 1 Press the "M" button in FM mode.
 - The PRESET screen will appear.
- 2 Use ◀◀◀, ▶▶▶ to move to the desired frequency.



Deleting Stored Frequencies

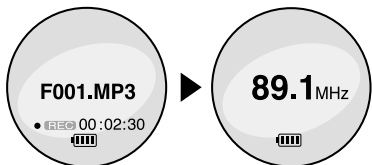
- 1 Press the "M" button in FM mode.
 - The PRESET screen will appear.
- 2 Use ◀◀◀, ▶▶▶ to select the preset number you want to delete.
- 3 Press the ►► button to display the Delete screen. Select YES, and then press the ►► button to delete the preset number.
 - The saved preset number will be deleted.



- Note**
- To exit FM mode, press and hold the "M" button.
 - Press the "M" button in PRESET screen to exit PRESET mode.
 - See pages 55-56 for more FM radio options.

FM Recording

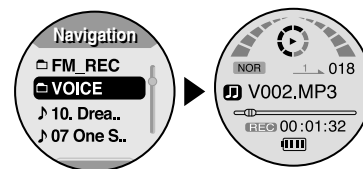
- 1 Press and hold the REC button during FM reception.
 - Recording of the currently transmitted FM broadcast begins.
- 2 Press the REC button again.
 - A file is created and the Recording stops.
 - Files are recorded in the order F001, F002, F003... and saved as MP3 files in FM_REC folder.



Using Navigation

You can easily search for files or switch modes using the Navigation function.

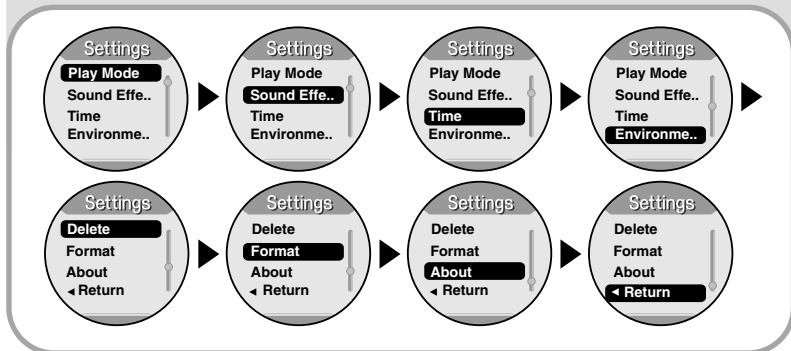
- 1 Press the "M" button to enter Navigation mode (except if you are in FM radio mode), or press and hold the "M" button to move to Menu and then select Navigation.
 - 2 Select the file or folder that you want to play.
 - **⏪**: To move to a higher-level folder.
 - **⏩**: To move to a lower-level folder.
 - **-**, **+**: To move to a file or folder in the same directory.
 - **▶**: To open the current highlighted menu item.
 - 3 Press the **▶** button.
 - The selected file will be played.



Note ■ Press the "M" button in Navigation mode to exit the Navigation mode.

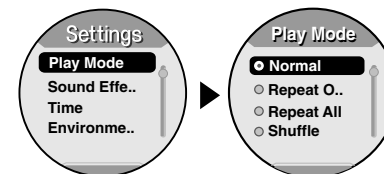
| Setting the Advanced Functions

- 1 Select Settings in the menu. (refer to "MENU Options")
- 2 In Settings, use **←**, **→** to move to the function you want and press **▶▶** to select.
 - To move to a previous menu, use **◀◀** or select Return.



Selecting the Play Mode |

- 1 Press and hold the "M" Button. Select **[Settings]** → **[Play Mode]**.
- 2 In Play mode, use **←**, **→** to move to the mode you want and press **▶▶** to select.

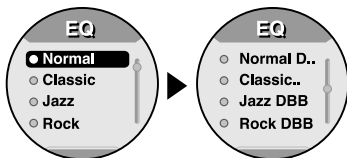


- **Normal** : To play all the files in order one time.
- **Repeat One** : To repeat one file.
- **Repeat All** : To repeat all files.
- **Shuffle** : To play files at random.
- **Return** : To move to a previous menu.

Setting Sound Effects

EQ

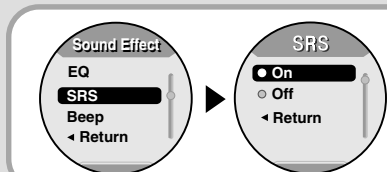
- Press and hold the “M” Button. Select **[Settings] → [Sound Effect] → [EQ]**.
- Use **—**, **+** to move to the sound mode you want and then press **▶▶I** button.
- If you want Bass booster, select DBB.
- **Normal → Classic → Jazz → Rock → Normal DBB → Jazz DBB → Rock DBB**



Note ■ DBB stands for Dynamic Bass Boost.

SRS

- Press and hold the “M” Button. Select **[Settings] → [Sound Effect] → [SRS]**.
- Use **—**, **+** to select SRS On or Off.
- **On**: You will hear 3D Stereo sound.
- **Off**: Music file is played in the current EQ mode chosen.

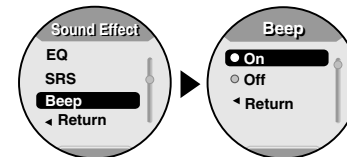


Setting Sound Effects

- Note**
- **SRS** is a trademark of SRS Labs, Inc. WOW technology is incorporated under license from SRS labs, Inc.
 - Please adjust the volume to a suitable level, as the volume may increase in the SRS setting.
 - This unit supports sampling frequencies of 32KHz, 44.1KHz or 48KHz.
 - The SRS function cannot be set voice recording files.

Beep

- Press and hold the “M” Button. Select **[Settings] → [Sound Effect] → [Beep]**.
- Use **—**, **+** to select Beep On or Off.
- **On**: The unit beeps when the buttons are pressed.
- **Off**: The unit does not beep.

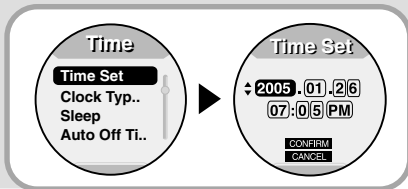


Time Settings

Time Set

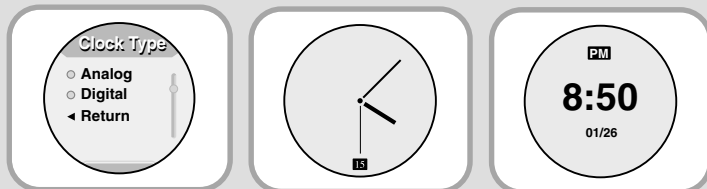
- Use the Time Set function to set the current time.

- 1 Press and hold the “M” Button. Select **[Settings]** → **[Time]** → **[Time Set]**.
- 2 Use **—**, **+** to set the clock time, and then press **▶▶** to move to the next stage.
- 3 After setting the current time, move to CONFIRM and then press **▶▶**.
 - The current time will be displayed.



Clock Type Set

- Press and hold the “M” Button. Select **[Settings]** → **[Time]** → **[Clock Type Set]**.
- Use **—**, **+** to select Analog type or Digital type for the clock display.



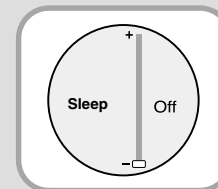
Analog type

Digital type

Time Settings

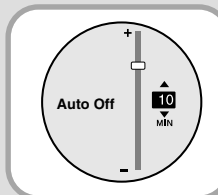
Sleep

- Press and hold the “M” Button. Select **[Settings]** → **[Time]** → **[Sleep]**.
- Use **—**, **+** to set the sleep time from 15, 30, 60, 90, 120 minutes.
- The player will automatically turn off after the time you set.
- When sleep set to Off, the function is disabled.



Auto Off Time

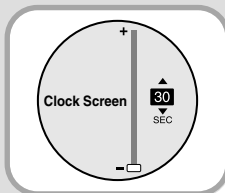
- Press and hold the “M” Button. Select **[Settings]** → **[Time]** → **[Auto Off Time]**.
- Use **—**, **+** to set the Auto Off time from 30 seconds, 1, 5, 10, 15 minutes.
- If no button is pressed after play stops, the player will automatically turn off after the time you set.
- When Auto Off is set to Off, the function is disabled.




Time Settings

Clock Screen Saver

- Press and hold the “M” Button. Select **[Settings]** → **[Time]** → **[Clock Screen Saver]**.
- Use **—**, **+** to select time for the Screen Saver from 30 seconds, 1, 5, 10, or 15 minutes.
- If no button is pressed after playback, the screen will automatically display the clock screen saver.

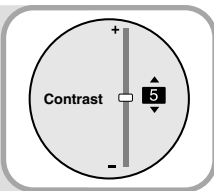


-  **Note** ■ Once the MP3 player is in Clock Screen mode, you must press **▶||** before you can play files or access menus.

Display Settings

Contrast

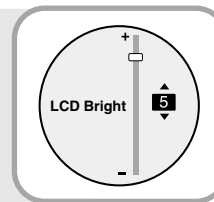
- Press and hold the “M” Button. Select **[Settings]** → **[Environment]** → **[Display]** → **[Contrast]**.
- Use **—**, **+** to set the Contrast level of the display from 0 to 10.



Screen Settings

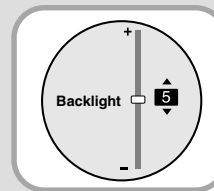
LCD brightness

- Press and hold the “M” Button. Select **[Settings]** → **[Environment]** → **[Display]** → **[LCD Brightness]**.
- Use **—**, **+** to set the LCD Brightness from 0 to 6.



Backlight Time

- Press and hold the “M” Button. Select **[Settings]** → **[Environment]** → **[Display]** → **[Backlight Time]**.
- Use **—**, **+** to set the Backlight Time from Off to 9 seconds
- When set to On, the Light stays on continuously.



| Language Setting

You can select a menu language from 10 languages.

- 1 Press and hold the “M” Button. Select **[Settings]** → **[Environment]** → **[Language]**.
- 2 Use **—**, **+** to select a desired menu language and then press **▶▶**.
 - English → Korean → French → German → Italian → Japanese → Simp.Chinese → Spanish → Trad.Chinese → Russian



FM Radio Settings |

Auto Preset

- Press and hold the “M” Button. Select **[Settings]** → **[Environment]** → **[FM Setting]** → **[Auto Preset]**.
- Frequencies within the range of 87.5MHz to 108.0MHz are automatically selected and stored.
- Frequencies are automatically stored, starting from 1.



Note ■ You can store up to 20 frequencies.

FM Search Level

- Press and hold the “M” Button. Select **[Settings]** → **[Environment]** → **[FM Setting]** → **[FM Search Level]**.
- Use **—**, **+** to select FM tuner sensitivity.
- The higher the FM tuner sensitivity, the more stations it can receive .
- **High** → **Middle** → **Low**



FM Radio Settings

FM Region

- Press and hold the “M” Button. Select **[Settings]** → **[Environment]** → **[FM Setting]** → **[FM Region]**.
- Use **—**, **+** to select FM tuner region,




- USA, Korea, : Search FM frequencies between 87.5MHz to 108.0MHz in increments of 100 kHz.
- Japan : Search FM frequencies between 76.0MHz to 108.0MHz in increments of 100 kHz.
- Other Country : Search FM frequencies between 87.50MHz to 108.00MHz in increments of 50 kHz.

Managing Files

Deleting Files

- 1 Press and hold the “M” Button. Select **[Settings]** → **[Delete]**.
- 2 Use **—**, **+** to move to the file you want to delete and then press **▶▶**.
- 3 Use **—**, **+** to move to YES and then press **▶▶**.
 - The selected file will be deleted.



 **Note** ■ When deleting a file, the track currently played will stop.

Managing Files

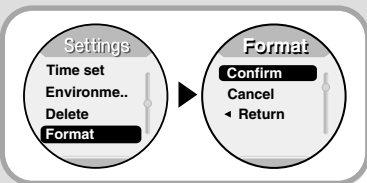
MENU Table

Formatting from the MP3 player

1 Press and hold the "M" Button. Select [Settings] → [Format].

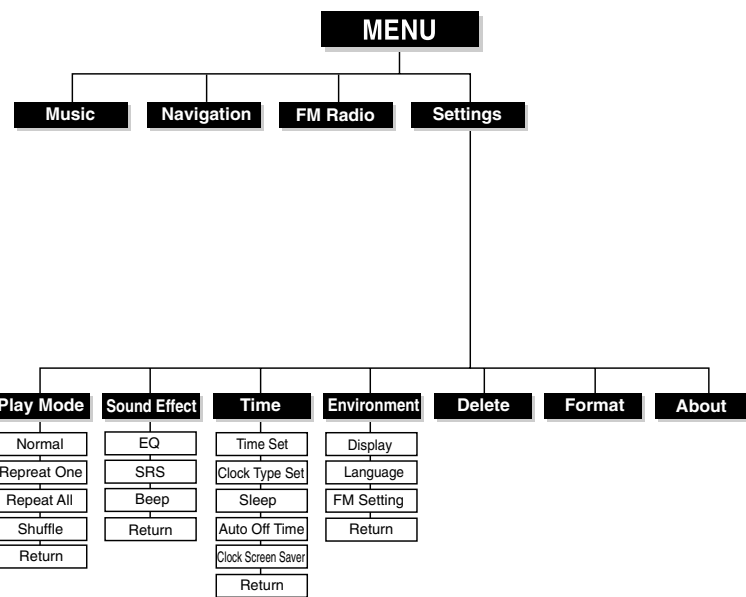
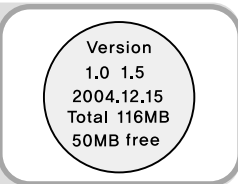
2 Use **—**, **+** to select Confirm and then press **▶▶▶**.

- Memory is formatted and all saved files are deleted.



About

- Press and hold the "M" Button. Select [Settings] → [About].
- If you select About, you can check the software version information, today's date, total number of tracks and memory capacity.




■ You can navigate and select menus with the **—**, **+** or **◀◀**, **▶▶** buttons.

Troubleshooting

The software doesn't work

- Refer to the System Requirements

The player does not work and the LCD displays nothing.

- Reset your player by pressing the **M** and  buttons simultaneously.
- Plug the charger into an outlet.

In PLAY mode, music is not played after pressing the **▶||** button

- Check to see if MP3 or WMA files are saved in the built-in memory.
- Check to see if the HOLD button is locked.

Files cannot be downloaded.

- Check to see if the driver is installed correctly in the computer.
- Check the connection between the player and PC.
- Operating system limits the number of files you can save. Please save your music files by creating a subfolder.
- Check if the memory is full.


Backlight does not work.

- Check the backlight setup.
- When the battery power is low, the backlight will go out.

60

Troubleshooting

The buttons do not work.

- Check to see if the HOLD button is locked.
- Reset your player by pressing the **M** and  buttons simultaneously.

The player keeps turning off.

- In Stop mode, the power is automatically turned off (changes depending on settings).
- Check to see if there are files saved in it.

LCD window is dark

- Check Contrast

The file name is not displayed correctly.

- Select [Settings] → [Environment] → [Language] from the menu and change the language settings.

I cannot properly connect the player to the PC.

- Win98 : Try to connect again after installing Driver.
- WinME/2000/XP : Press Start in the desktop to execute Windows Update. After selecting important update and service pack, execute update all. Try to connect it again after rebooting PC.

ENG

61

Specifications

Model	YP-W3
Built-in Memory capacity	1GB (YP-W3)
Voltage	3.7V (Li-ion)
Playing time	lasts up to 8hours (MP3 128Kbps, Vol level 20)
Dimensions/Weight	2.08" X 2.44" X 0.59" / 2.4 oz
Case	Zinc/Plastic
Signal to Noise Ratio	90dB with 20KHz
Earphones Jack Output Power	17mW/CH (16Ω)
Output Frequency Range	20Hz~20KHz
Operating Temperature Range	-5 ~ +35°C(23~95°F)
FM Frequency	87.5 ~ 108.0 MHz
FM Signal to Noise Ratio	50dB
FM T.H.D	1%
FM Useable Sensitivity	10dB
File Support	MPEG1/2/2.5 LAYER 3 (8Kbps ~ 320Kbps, 8KHz ~ 48KHz) MPEG1 LAYER 2 (32Kbps ~ 384Kbps, 32KHz, 44.1KHz, 48KHz) WMA, ASF(Audio) (8Kbps ~ 192Kbps, 8KHz ~ 44.1KHz), Ogg

Specifications

The product unit accompanying this user manual is licensed under certain intellectual property rights of certain third parties. In particular, this product is licensed under the following US patents : 5,991,715, 5,740,317, 4,972,484, 5,214,678, 5,323,396, 5,539,829, 5,606,618, 5,530,655, 5,777,992, 6,289,308, 5,610,985, 5,481,643, 5,544,247, 5,960,037, 6,023,490, 5,878,080, and under US Published Patent Application No. 2001-44713-A1.

This license is limited to private non-commercial use by end-user consumers for licensed contents. No rights are granted for commercial use. The license does not cover any product unit other than this product unit and the license does not extend to any unlicensed product unit or process conforming to ISO/IEC 11172-3 or ISO/IEC 13818-3 used or sold in combination with this product unit. The license only covers the use of this product unit to encode and/or decode audio files conforming to the ISO/IEC 11172-3 or ISO/IEC 13818-3. No rights are granted under this license for product features or functions that do not conform to the ISO/IEC 11172-3 or ISO/IEC 13818-3.

Safety Information

FCC

This device complies with part 15 of the FCC Rules. Operation is subject to the following two conditions:

(1) This device may not cause harmful interference, and (2) this device must accept any interference received, including interference that may cause undesired operation.

Caution: Any changes or modifications in construction of this device which are not expressly approved by the party responsible for compliance could void the user's authority to operate the equipment

Note: This equipment has been tested and found to comply with the limits for a Class B digital device, pursuant to part 15 of the FCC Rules. These limits are designed to provide reasonable protection against harmful interference in a residential installation. This equipment generates, uses and can radiate radio frequency energy and, if not installed and used in accordance with the instructions, may cause harmful interference to radio communications. However, there is no guarantee that interference will not occur in a particular installation.

If this equipment does cause harmful interference to radio or television reception, which can be determined by turning the equipment off and on, the user is encouraged to try to correct the interference by one or more of the following measures:

- ◆ Reorient or relocate the receiving antenna.
- ◆ Increase the separation between the equipment and receiver.
- ◆ Connect the equipment to an outlet on a circuit different from that to which the receiver is connected.
- ◆ Consult the dealer or an experienced radio/TV technician for help.

FCC

Any changes or modifications not expressly approved by the grantee of this device could void the user's authority to operate the device.

Compliance

This product conforms to the following Council Directive:

- ◆ Directive 89/336/EEC, 92/31/EEC(EMC)

Declaration of Conformity

Name: Samsung Electronics Co., Ltd
Address: 416, Maetan-3Dong, Paldal-Gu, Suwon City, Kyungki-Do, Korea 442-742
declares under its sole responsibility that the product
Trade Name: Samsung Electronics Co., Ltd
Model Number: YP-W3
has been tested according to the FCC/CISPR22/95 requirements for Class B devices and found compliant with the following standards

Safety Information

ENG

EMI/EMC: AnSi C63.4 1992, FCC Part 15 Subpart B

This device complies with part 15 of the FCC Rules.

Operation is subject to the following two conditions:

- 1.This device may not cause harmful interference, and
- 2.This device must accept any interference received, including interference that may cause undesirable operation.

Party Responsible for Product Compliance

Samsung Electronics America
QA Lab.
3351 Michelson Dr. Suite #290
Irvine, CA92612

Warranty

Warranty

ENG

Samsung warrants this product as free of defects in material, design and workmanship for a period of twelve(12) months from the original date of purchase.

If during the period of warranty this product proves defective under normal use and service, you should return the product to the retailer from whom it was originally purchased. The liability of Samsung and its appointed maintenance company is limited to the cost of repair and/or replacement of the unit under warranty.

Return of the product for defective reasons should be to the original purchaser; however, Samsung Authorized Dealers and Authorized Service Centers will comply with the warranty on the terms issued to purchasers in the country concerned. For further information relating to the Authorized Service Centers contact;
1-800-SAMSUNG (1-800-726-7864)
www.samsung.com

WARRANTY CONDITIONS:

1. The warranty is only valid when the warranty card is properly completed, and upon presentation of the proof of purchase consisting of original invoice or sales slip confirmation, indicating the date of purchase, dealer's name, model, serial No. and product number.

Samsung reserves the right to refuse warranty service if this information has been removed or changed after the original purchase of the product from the dealer.

2. Samsung's obligations are to the repair of the defective part, and at its discretion, replacement of the product (service exchange unit).

3. Warranty repairs must be carried out by an Authorized Samsung Dealer/Service Center. No reimbursement will be made for repairs carried out by non Samsung Centers, and warranty coverage will not be valid for any repairs or damage caused by such repairs.

4. Repair or replacement under the terms of this warranty does not give right to extension to or a new starting of the period of warranty. Repair or direct replacement under the terms of this warranty may be fulfilled with functionally equivalent service exchange units.

5. The warranty is not applicable in cases other than defects in material, design and workmanship. The warranty does not cover the following:

- ◆ Periodic checks, maintenance, repair and replacement of parts due to normal wear and tear.

- ◆ Abuse or misuse, including but not solely limited to the failure to use this product for its normal purpose or in accordance with Samsung's instructions usage and maintenance.

- ◆ Use of the product in conjunction with accessories not approved by Samsung for use with this product.

- ◆ Failure of the product arising from incorrect installation or use not consistent with technical or safety standards in current force, or failure to comply with product manual instructions.

- ◆ Accidents, Acts of God or any cause beyond the control of Samsung caused by lightning, water, fire, public disturbances and improper ventilation.

- ◆ Unauthorized modifications carried out for the product to comply with local or national technical standards in countries for which the Samsung product was not originally designed.

- ◆ Repairs performed by non-authorized service centers such as opening of the product by a non-authorized person.

- ◆ The model, serial No. and product number on the product has been altered, deleted, removed or made illegible.

6. This warranty does not affect the consumer's statutory rights nor the consumers rights against the dealer from their purchase/sales agreement.

Warranty

THERE ARE NO EXPRESS WARRANTIES OTHER THAN THOSE LISTED AND DESCRIBED ABOVE, AND NO WARRANTIES WHETHER EXPRESS OR IMPLIED, INCLUDING, BUT NOT LIMITED TO, ANY IMPLIED WARRANTIES OF MERCHANTABILITY OR FITNESS FOR A PARTICULAR PURPOSE, SHALL APPLY AFTER THE EXPRESS WARRANTY PERIODS STATED ABOVE, AND NO OTHER EXPRESS WARRANTY OR GUARANTY GIVEN BY ANY PERSON, FIRM OR CORPORATION WITH RESPECT TO THIS PRODUCT SHALL BE BINDING ON SAMSUNG. SAMSUNG SHALL NOT BE LIABLE FOR LOSS OF REVENUE OR PROFITS, FAILURE TO REALIZE SAVINGS OR OTHER BENEFITS, OR ANY OTHER SPECIAL, INCIDENTAL OR CONSEQUENTIAL DAMAGES CAUSED BY THE USE, MISUSE OR INABILITY TO USE THIS PRODUCT, REGARDLESS OF THE LEGAL THEORY ON WHICH THE CLAIM IS BASED, AND EVEN IF SAMSUNG HAS BEEN ADVISED OF THE POSSIBILITY OF SUCH DAMAGES. NOR SHALL RECOVERY OF ANY KIND AGAINST SAMSUNG BE GREATER IN AMOUNT THAN THE PURCHASE PRICE OF THE PRODUCT SOLD BY SAMSUNG AND CAUSING THE ALLEGED DAMAGE. WITHOUT LIMITING THE FOREGOING, PURCHASER

ASSUMES ALL RISK AND LIABILITY FOR LOSS, DAMAGE OR INJURY TO PURCHASER AND PURCHASER'S PROPERTY AND TO OTHERS AND THEIR PROPERTY ARISING OUT OF THE USE, MISUSE OR INABILITY TO USE THIS PRODUCT SOLD BY SAMSUNG NOT CAUSED DIRECTLY BY THE NEGLIGENCE OF SAMSUNG. THIS LIMITED WARRANTY SHALL NOT EXTEND TO ANYONE OTHER THAN THE ORIGINAL PURCHASER OF THIS PRODUCT, IS NONTRANSFERABLE AND STATES YOUR EXCLUSIVE REMEDY.

Some states do not allow limitations on how long an implied warranty lasts, or the exclusion or limitation of incidental or consequential damages, so the above limitations or exclusions may not apply to you. This warranty gives you specific legal rights, and you may also have other rights which vary from state to state. This product is for personal use only, and is only for use in compliance with the limitations of copyright and other laws.

To obtain warranty service, please contact SAMSUNG at:
 Samsung Electronics America, Inc.
 400 Valley Road, Suite 201 Mount Arlington,
 NJ 07856
 1-800-SAMSUNG (1-800-726-7864)
www.samsung.com
 081299

Warranty

ENG